

**A NEW SPECIES OF *LONCOPHORUS* FROM MEXICO
(COLEOPTERA: CURCULIONIDAE, ANTHONOMINI)
ASSOCIATED WITH *MORTONIODENDRON* (MALVALES:
TILIACEAE)**

WAYNE E. CLARK*

RESUMEN

Se describe e ilustra la nueva especie mexicana *Loncophorus angusticollis*, asociada con *Mortoniendron guatemalense* Standley & Steyermark (Malvales: Tiliaceae). La nueva especie parece estar muy cercana a *L. costalimai* Clark, de Brasil.

Palabras clave: especie nueva, *Loncophorus*, Coleoptera.

ABSTRACT

Adults of *Loncophorus angusticollis*, a new species from Mexico associated with *Mortoniendron guatemalense* Standley & Steyermark (Malvales: Tiliaceae), are described and illustrated. The new species appears to be most closely related to the Brazilian *L. costalimai* Clark.

Key words: new species, *Loncophorus*, Coleoptera.

The anthonomine genus *Loncophorus* Chevrolat contains 13 species distributed from Mexico southward to Argentina (Clark, 1988). Previously known hosts of species of *Loncophorus* are all members of the plant family Bombacaceae (Clark, 1988). The new species described herein is the first member of the genus reported from a member of the related family Tiliaceae. The species is of interest because of its potential importance in ongoing investigations intended to elucidate the relationships of the species of *Loncophorus* to the species of *Anthonomus* assigned to the subgenus *Anthonomorphus* Dietz and to the *Anthonomus grandis* species group (Clark, 1988, Clark & Burke, 1986a).

* Department of Entomology, Alabama Agricultural Experiment Station, Auburn University, Alabama 36849-5413, U.S.A.

Measurements were made according to specifications outlined previously (Clark 1988). Exact label data are cited for types. Separate labels are indicated by brackets ([]), each separate line by a virgule (/).

Loncophorus angusticollis Clark, sp. nov.

Figs. 1-5

Holotype. MEXICO. VERACRUZ: [MEXICO: Veracruz. Est./ Biol. de los Tuxtlas/ 18° 35' N 95°65'W] [28.IV.1991/H.A. Hespeneheide] (♂, Instituto de Biología, Entomological collection, Universidad Nacional Autónoma de México, Mexico City, Mexico).

Paratypes (2). MEXICO. VERACRUZ: [México, Ver. Est. Biol. de/ Los Tuxtlas/ Alt. 400 MSNM/20-VIII-85/ O. Andrade] [63-A] [Mortoniodendron (sic.) / guatemalense/ Tiliaceae] (1♂, 1♀, C. W. O'Brien collection, Tallahassee, Florida, U.S.A.).

Male (Figs. 1, 2). *Length*: 6.08-6.32 mm. *Width*: 2.48-2.64 mm. *Head*: eyes round, slightly, evenly convex, separated by distance ca. 0.7 × width of rostrum at base. *Rostrum*: long, slender, slightly, evenly curved, strongly tricarinate proximally; length 0.53-0.57 × total body length; length of distal portion 31-36% of total rostral length. *Pronotum*: narrower basally than elytra at base, distinctly narrowed anteriorly in dorsal view; sparsely, irregularly punctate; interspaces smooth, shining; each puncture with one long, narrow, subpustulate fulvous scale. *Elytra*: strongly, evenly convex in lateral view, slightly widened posteriorly from humeri, broadly rounded at apices; interstriae subequal in width, with alternating low, densely punctate sections and slightly raised, smooth, shining sections, the latter especially long on median portions of interstriae 3-5; low, densely punctate sections glabrous. *Abdomen*: sternum 5 flattened medially, with sparse, narrow, setiform scales. *Pygidium* (Fig. 3): slightly emarginate posteromedially and apicomediaally; broadly, shallowly channeled dorsomedially. *Legs*: profemur slender basally, slightly inflated distally, 1.4 × broader than metafemur, with one large ventral tooth with one deep anteromarginal emargination; metafemur with one, small, uncinuate ventral tooth; protibi with well-developed median prominence on inner margin, without preapical spine but with distinct preapical tuft of long setiform scales; protibial uncus slender, curved; metatibia slightly expanded apically; metatibial mucro obsolete. *Genitalia* (Figs. 4, 5): aedeagus subparallel-sided, with apicomedian prominence in dorsal and lateral views; tegmen without parameres, ring not closed dorsally; endophallus unarmed.

Female. *Length*: 6.08 mm. *Width*: 2.44 mm. *Rostrum*: length 0.58 × total body length; length of distal portion 43% of total rostral length.

Plant associations. According to the labels, the paratypes of *L. angusticollis* were collected in association with *Mortoniodendron guatemalense* Standley & Steyermark. These adults are teneral, probably taken directly from their developmental sites or reared and killed soon after ecdysis. Larvae of some of the previously described

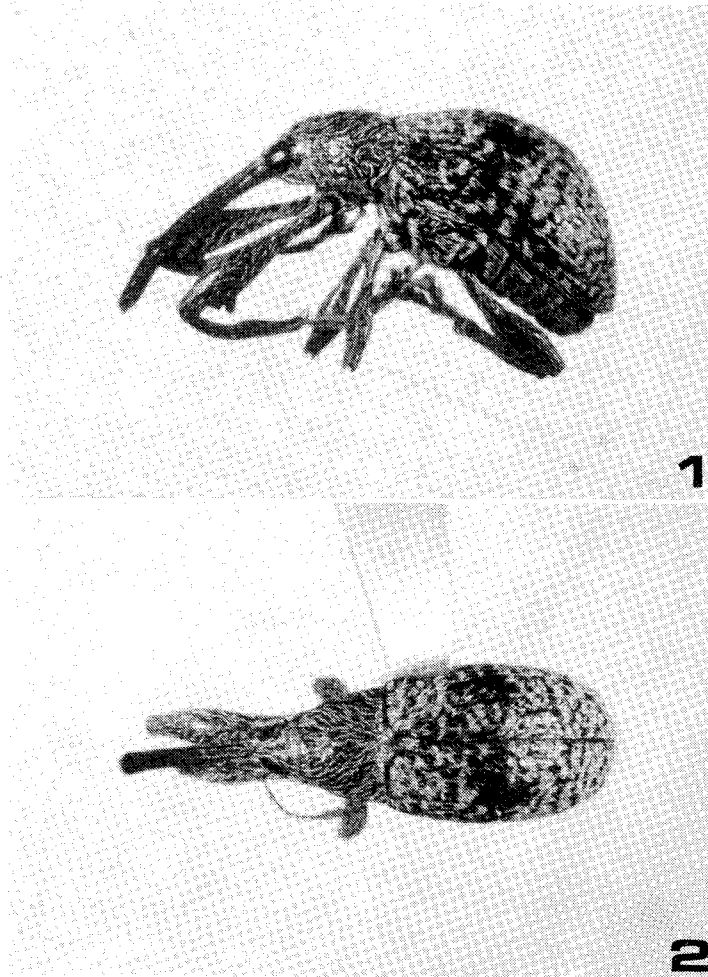


Fig. 1-2 . *Loncophorus angusticollis*, habitus, male, holotype. 1) lateral view; 2) dorsal view.

species of *Loncophorus* are known to develop in seeds or flower buds of their host plants (Clark, 1988). This is probably true as well of *L. angusticollis*.

Relationships. *Loncophorus angusticollis* appears to be most closely related to *L. costalimai* Clark. Adults of *L. angusticollis* are not "navicular" in body form, but the males have subtrapezoidal mesotrochanters like those of the *Loncophorus* described by Champion (1903) as navicular. The Brazilian *L. costalimai* is the only previously described species that exhibits this combination of "non-navicular" body form and subtrapezoidal mesotrochanters. Adults of the new species are also like *L. costalimai* in not having the prosternum extended downward in front of the

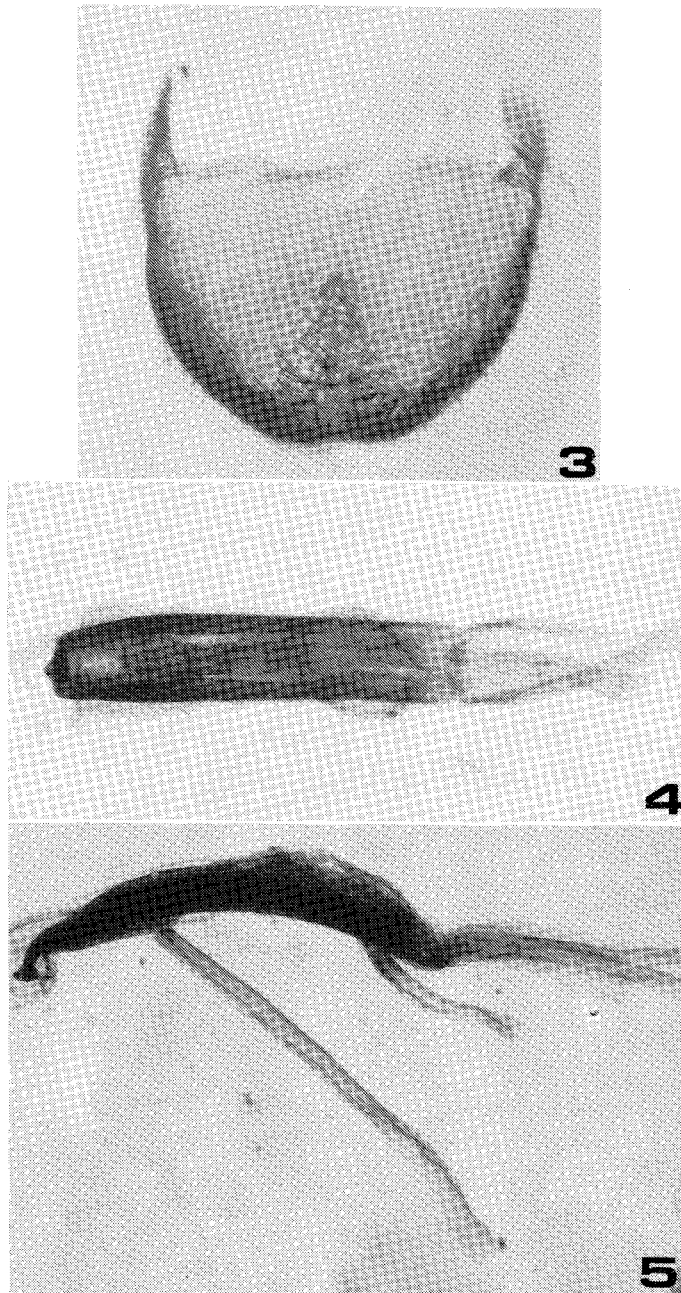


Fig. 3-5. *Loncophorus angusticollis*, male, holotype. 3) pygidium, dorsal view; 4) eadeagus, dorsal view; 5) aedeagus, lateral view.

procoxae and in lacking elytral depressions covered with dense scales, characteristic of most "navicular" *Loncophorus*. They differ from *L. costalimai*, however, in the narrower pronotum, the more evenly distributed elytral vestiture, and in the absence of a discal pustule on elytral interstria 5 (cf. Figs. 1, 2 and Clark, 1988, Figs. 17, 18). The apicomedian prominence of the eadeagus of *L. angusticollis* (Fig. 5) is not present in *L. costalimai*.

The host relationships of *L. angusticollis* are of interest from the standpoint of the relationship of the species to the other species of *Loncophorus* and to other anthonomines. Although heretofore reported hosts of the species of *Loncophorus* are all members of the family Bombacaceae (Clark, 1988), the association of *L. angusticollis* with Tiliaceae does not necessarily mark the species as an outsider since the Tiliaceae are placed with the Bombacaceae, Elaeocarpaceae, Malvaceae and Sterculiaceae, in the Order Malvales (Goldberg, 1986).

It seems possible that *Loncophorus*, *Anthonomorphus* and the *A. grandis* group are part of a monophyletic anthonomine lineage restricted to the Malvales. Only one species of Anthonomini, *Lonchophorellus callosus* (Faust), has been reported to be associated with plants in the family Sterculiaceae, and this only from "foliage" and hence a doubtful host association (Clark, 1989). No anthonomines have been reported from the Elaeocarpaceae. Various species of Malvaceae, on the other hand, are hosts of no fewer than 20 species of Anthonomini, most of them in the genus *Anthonomus*. These include the species in the *Anthonomus grandis* group and the species in the *Anthonomus* subgenus *Anthonomorphus*. The species in the *A. grandis* group appear to be restricted to the Malvaceae (Cross et al., 1975, Burke et al., 1986), as are the species of *Anthonomorphus* (Burke, 1964, Burke et al., 1984, Clark & Burke, 1986a). The larvae and pupae of the species of *Anthonomorphus* differ only slightly from those of *L. fusiformis* and *L. santarosae* (Clark & Burke, 1986b). Clark (1988) provided evidence that the species of *Anthonomorphus* might belong in a monophyletic group that also includes some of the species assigned to *Loncophorus*, and the *A. grandis* group appears to be closely related to *Anthonomorphus* (Clark & Burke, 1986a). Further considerations of the relationships of these groups to each other should include examination of *L. angusticollis*.

Etymological note. The specific epithet, from the Latin *angustus*, narrow, and *collum*, neck, refers to the narrow pronotum of *L. angusticollis*.

ACKNOWLEDGMENTS

I express appreciation to H. A. Hespeneide and C.W. O'Brien for marking the specimens of *L. angusticollis* available for study and to H.R. Burke, R. Jones and G. Folkerts for critical review of the manuscript, published as Alabama Agricultural Experiment Station Journal Series No. 17-944890.

LITERATURE CITED

- BURKE, H. R. 1964. Studies on the genus *Anthonomus* in North and Central America (Coleoptera: Curculionidae) II. The subgenus *Anthonomorphus* Dietz. *Coleopterists Bulletin*, 18 (1): 7-17.
- BURKE, H. R., W. E. CLARK & W. H. CROSS. 1984. Larvae and pupae of the *Anthonomus* subgenus *Anthonomorphus* Dietz, *A. grandis* Boheman and *A. hunteri* Burke and Cate (Coleoptera: Curculionidae). *Southwestern Entomologist* 9 (1): 84-90.
- BURKE, H. R., W. E. CLARK, J. R. CATE & P. A. FRYXELL. 1986. Origin and dispersal of the boll weevil. *Bulletin of the Entomological Society of America* 32 (4): 228-238.
- CHAMPION, G. C. 1903. Insecta. Coleoptera. Rhynchophora. Curculionidae. Curculionoidea. Curculioninae (part), vol. 4, pt. 4. In: F.D. Godman & O. Salvin (eds.). 1879-1911. *Biologia Centrali-Americana, Insecta, Coleoptera*, 7 vols. in 17 parts. Dulau, London, pp. 145-312.
- CLARK, W. E. 1988. Revision the weevil genus *Loncophorus* Chevrolat (Coleoptera: Curculionidae, Anthonominae). *Quaestiones Entomologicae* 24 (3): 465-518.
- CLARK, W. E. 1989. *Loncophorellus* Clark, a new genus of neotropical Anthonomini (Coleoptera: Curculionidae). *Coleopterists Bulletin* 43 (3): 279-289.
- CLARK, W. E., & H. R. BURKE. 1986a. Phylogeny of the species of the *Anthonomus* subgenus *Anthonomorphus* Dietz, with discussion of relationships with *Anthonomus grandis* Boheman (Coleoptera: Curculionidae). *Journal of the Kansas Entomological Society* 59 (3): 508-516.
- CLARK, W. E. & H. R. BURKE. 1986b. A new Neotropical species of *Anthonomus* Germar (Coleoptera: Curculionidae) associated with *Bombacopsis quinata* (Bombacaceae). *Proceedings of the Entomological Society of Washington* 88 (2): 320-327.
- CROSS, W. H., J. J. LUKEFAHR, P. A. FRYXELL, & H. R. BURKE. 1975. Host plants of the boll weevil. *Environmental Entomology* 4: 19-26.
- GOLDBERG, A. 1986. *Classification, evolution, and phylogeny of the families of Dicotyledons*. Smithsonian Contributions to Botany, Number 58. Smithsonian Institution Press, Washington, D.C. 314 p.